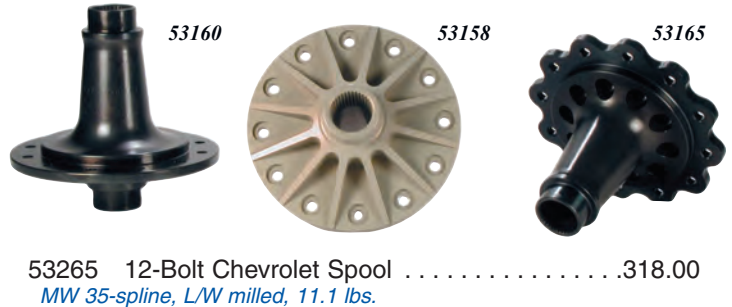


## GM 12 BOLT SPOOLS

- 53130 10-Bolt 8.5" Chevrolet Spool .....269.00  
*MW 35-spline 1970 or later 10 bolt, weight 14 lbs.*
- 53158 12-Bolt Aluminum Spool .....517.00  
*MW 35 spline, housing must be bored to 3.250". Includes 58925 shim kit and 53161A bearing kit. 5.3 lbs.*
- 53160 12-Bolt Chevrolet Spool .....269.00  
*MW 35-spline, weight 14 lbs.*
- 53164 12-Bolt Chevrolet Spool .....283.00  
*30-spline, requires C-clip kit or weld on ends, weight 14 lbs.*
- 53165 12-Bolt Chevrolet Spool .....318.00  
*MW 35-spline, L/W milled, weight 11 lbs.*



53265 12-Bolt Chevrolet Spool .....318.00  
*MW 35-spline, L/W milled, 11.1 lbs.*

## GM 12 BOLT POSI-TRACTION

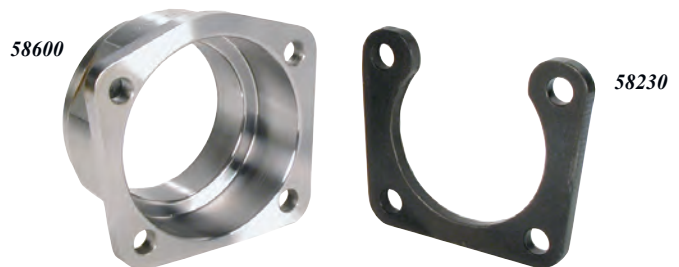


Mark Williams stocks Eaton™ posi-traction units for 10 and 12 Bolt GM applications. All Eaton™ units feature carbon fiber clutches.

- 19554 12 Bolt Eaton™ Posi-Traction (Series 3).. .513.00  
*30 spline with 800 lb. clutch preload. For 3.08 to 4.10 ratios.*
- 19555 12 Bolt Eaton™ Posi-Traction .....474.00  
*30 spline with 400 lb. clutch preload. For 4.10 and up ratios.*
- 19556 12 Bolt Eaton™ Truck Posi-Traction .....474.00  
*30 spline with 400 lb. clutch reload. For 3.73 and up ratios.*
- 19557 8.5 10 Bolt Eaton™ Posi-Traction .....498.00  
*28 spline with 400 lb. clutch preload. For 2.73 and up ratios.*

## GM HOUSING ENDS & RETAINERS

- 58400 G.M. Housing Ends, (pr) .....153.88  
*Full size 12 Bolt, Chevrolet Impala, Biscayne and 1/2-ton pickup, for 58503, 58504 or 58505 sealed axle bearings.*
- 58450 G.M. Housing Ends, (pr) .....164.00  
*Full size 12 Bolt, for 58506 Timken® tapered roller axle bearings and seals.*
- 58410 Full Size GM Bearing Retainers (pr) .....29.00  
*For MW 58400 Full Size GM housing ends.*
- 58560 G.M. Housing Ends, (pr) .....175.96  
*Mid-size 10/12 Bolt, for 58506 Timken® tapered roller axle bearings and seals.*
- 58600 G.M. Housing Ends (pr) .....130.00  
*Mid-size 10/12 Bolt, for 58503, 58504 or 58505 sealed axle bearings.*



58230 Standard GM Bearing Retainers (pr) .....29.00  
*For MW 58600 10 and 12-bolt housing ends.*

## GM HOUSING END KITS



MW weld on housing ends allow use of larger axle bearings and eliminate potential grease leakage that can occur with adapter type bearing ends. End kits are available for most popular GM brake assemblies.

- 58610 Housing End Kit, Drag Racing .....279.50  
*Contains 58600 housing ends, 58505 bearings, 58230 retainers, and backing plate bolts.*
- 68700 Housing End Kit, Small GM Pro-street .....334.11  
*For GM small brakes (Camaro, Chevelle, Nova) Pro-Street applications, includes housing ends, Timken® bearings, retainers, seals, and backing plate bolts.*
- 68740 Housing End Kit, Large GM Pro-street .....336.74  
*10 & 12-Bolt Chevrolet brakes (Impala, Biscayne & 1/2-ton truck) Pro-Street applications, includes housing ends, Timken® bearings, retainers, seals, and backing plate bolts.*

