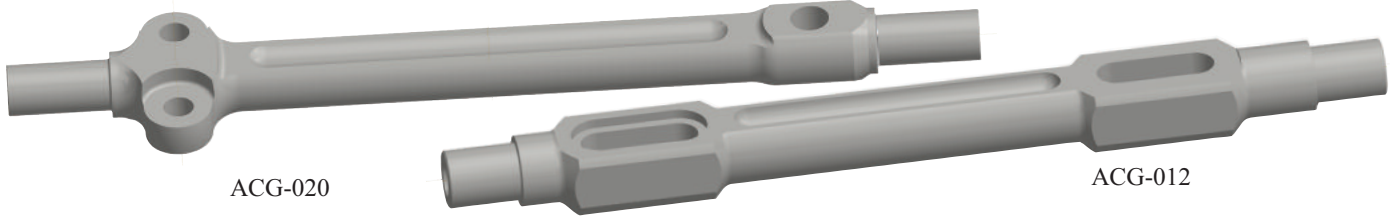


CORVETTE C2 AND C3 CONTROL PIVOT SHAFT



ACG-020

ACG-012

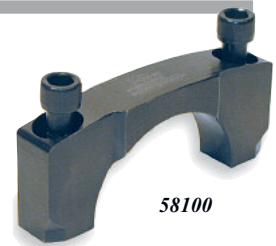
ACG-020 Control Arm Shaft Lower ea487.00 ACG-012 Control Arm Shaft Upper ea365.00

Designed to replace the original low carbon GM part, the ACG-020 is made from billet 4140 steel and heat treated with the M/W Austempering process and shot peened. Journals for lower pivot bushings have a 7/16-20 thread upper have 3/8-24 thread. The lower control mounting surface is raised approximately 1/8" for a slight improvement in the roll center. Priced each.

NOTE: A Spherical Bearing and hardware kit is available from ACG Enterprises e-mail: c_geatches@sbcglobal.net

CORVETTE C2 AND C3 DIFFERENTIAL PARTS

One of the most common causes of Corvette rear end component failure can be traced to the stock rear end caps. To cure this problem, MW makes a replacement cap from billet steel with an increased cross section and heat treated grade 8 hardware (included). Precision measuring of the cap bore and milling of cap parting line is required to install. Normally, only the driver's side cap has to be replaced, but most customers replace both. Check out the cap installation instructions (Service Bulletin #0007) on our website. Not a returnable part after it is installed.



58100

58100 Differential Cap C2-C3 Corvette70.00

PINION YOKE AND HALF SHAFTS



39038

Replace the weak 1310 series factory Pinion Yoke with 1350 series u-joints. Manufactured from high strength, heat treated 4340 steel. All machining is done in relationship to the spline pitch diameter to ensure each yoke is symmetrical for balance and smooth operation. Designed to use

the 2nd generation alloy steel cap kit for added strength or standard u-bolts. - Sold separately. 58918 nut and washer kit required.

39038 Pinion Yoke, 1350 Joint204.00
U-Bolt kit sold separate 39010 or 39112



39810

This C2/C3 Corvette rear axle half shaft features MW 4130 forged steel weld yokes, 1350 series non-greaseable, lubed for life universal joints. 3" O.D. x .083" heat-treated chromium-molybdenum tube with 13-7/8" centers. (Other lengths can be produced at the same cost.) Cold wire TIG welded. Sold AS A PAIR

39810 Half Shaft C2-C3 Corvette (pr)885.00
4130 Tube and End Fitting with Spicer Joints

BILLET CAPS, NUTS AND SPACERS



39112

These 2nd generation U-bolt (cap) kits feature a bubble stud that locates on the rear flange bolt hole indexing the location. The straps are produced from heat treated chromium-molybdenum steel.

39112 2nd Gen U-Bolt Kit97.00



58918 Kit

The Pinion attachment of the Corvette Needs a little help in maintaining the preload setting and making sure the pinion nut is secure. The Billet Nut and Solid Preload Spacer fits the bill.

58918 Pinion Nut & Washer Kit38.75
Required on 39038 pinion yoke.

58914 Preload Spacer47.00
Hardened 4140 with length to machine for preload



58914

