

HOUSING ENDS & RETAINERS

MW manufactures a full line of weld on housing ends. Most of our housing ends are CNC machined from **4130 heat treated forgings** and are designed to butt weld to the housing tube. The bolt patterns match the most popular brake assemblies. All MW housing ends are 2" long and have **provisions for inboard seals** that eliminates the possible gear oil leakage through the axle bearings. This extra length also reduces distortion problems of the bearing bore from final welding.

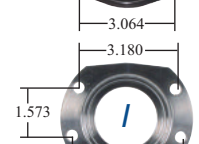
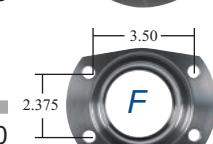
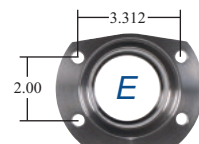
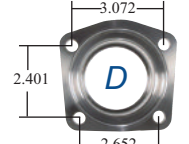
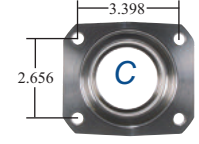
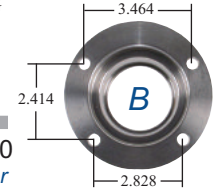
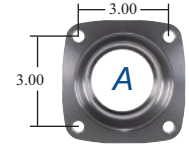
All Pro Street Housing ends use Timken® bearings and special outboard seals. Alignment tools are available to properly install the housing ends (page 59).



58599 for 3.346
85mm Bearing



57804



3.566 (width)

SYMMETRICAL

58599 Symmetrical Ends (pr)135.00
For 3.346 85 mm O.D. 58509 bearings. This is the housing end and bearing combination used by the top Chassis builders. With the inboard seal it eliminates fluid leakage issues. The mating bearing is a standard industrial bearing that is stronger than the common 3.150 Ford-Olds type bearing. 2" long fig. A

58580 Symmetrical Ends (pr)135.00
For all 3.150 O.D. bearings with a .826 (31mm) wide outer race, internal seal provision 2" long. fig. A

58585 Pro-Street Symmetrical Ends, (pr) .160.00
For 58506S Timken® unit bearings with that with 58516 outer seal and uses 58515 internal seal 2" Long fig. A

58595 Ends for 85mm Wide bearing (pr)...232.00
For 58508 Double Row wide bearing 2.25" for seal

OLDS/PONTIAC

58500 Olds/Pontiac (pr)124.00
For all 3.150 O.D. bearings. fig. B 2" Long

58501 Olds/Pontiac Retainers (pr)29.00

CHEVROLET

58400 Full Size GM (pr)166.00
For all 3.150 O.D. bearings. fig. C 2" Long

58600 Standard GM (pr)143.00
For all 3.150 O.D. bearings. fig. D 2" Long

58410 Full Size GM Retainers (pr)32.00

58560 Standard GM Pro Street (pr)175.96
For 58506 Timken® unit bearings. fig. D 2" Long

58230 Standard GM Retainers (pr)32.00

FORD

57800 Small Ford (pr)124.00
For all 3.150 O.D. bearings. fig. E 2" Long

57830 Large Ford 1/2" Holes (pr)130.00
For all 3.150 O.D. bearings. fig. F 2" Long

57801 Small Ford Retainers (pr)29.00

57840 Lincoln 3/8" Holes (pr)160.00
For all 3.150 O.D. bearings. fig. F2" Long

57802 New Style Ford Retainers (pr)29.00

57850 Lincoln 3/8" Holes Pro Street (pr) 140.00
For 58506 Timken® unit bearings. fig. F 2" Long

57804 Large Ford Retainers (pr)29.00

57860 New Style Ford (pr)130.00
For all 3.150 O.D. bearings. fig. G 2" Long

57805 Lincoln Retainer (pr)29.00

58510 8.8 Ford (pr)240.00
For all 3.150 O.D. bearings. Includes 3/8" backing plate studs. fig. H2" Long

57810 Small Ford Pro Street (pr)124.00
For 58506 Timken® unit bearings. fig. E 2" Long

58511 8.8 Ford Retainers (pr)32.00

57820 Large Ford 1/2" Holes Pro Street .124.00
For 58506 Timken® unit bearings. Pair fig. F 2" Long

MOPAR

53188 Mopar Pro Street (pr)198.00
For 58506 Timken® unit bearings. fig. I 2" Long

56501 Mopar Retainers (pr)32.00

53189 Mopar (pr)160.00
For all 3.150 O.D. bearings. fig. I 2" Long

toll free
800-525-1963

on the web
www.markwilliams.com 57