

## RAPID RELEASE YOKES

The MW Rapid Release yokes can be a real time saver during those quick transmission changes. They allow the driveshaft to be disconnected at the transmission rather than at the pinion, plus the cap design prevents over tightening and possible damage to the U joint cups. These yokes accept the 1350 series Spicer U joint and are the lightest and most compact units of this type on the market. Each yoke comes with caps and fasteners. Care must be exercised not to mix U-joint caps and maintain indexing after shaft is balanced. MW built driveshafts with these yokes have identifying index marks.

39102	Mopar Rapid Release Yoke	437.00
	30 spline. Mopar, Doug Nash and Liberty trans. "D"=6-1/8"	
39104	Turbo 400 Rapid Release Yoke	437.00
	32 spline. Turbo 400 and Super T-10 trans. "D"=5-3/4"	
39105	Powerglide Rapid Release Yoke	437.00
	27 spline. Powerglide and Turbo 350 trans. "D"=5-13/16"	
39113	Lenco Rapid Release Yoke	437.00
	32 spline. Lenco trans. "D"=4"	
39115	Rapid Release Yoke	437.00
	16 spline. Lenco trans. "D"=4"	
39120	Ford Rapid Release Yoke	437.00
	31 spline. C-6 and Toploader trans. "D"=6-1/8"	

## PINION YOKES

MW steel pinion yokes are CNC machined from heat treated 4340 steel forgings and they accept the Spicer 1350 series U-joint. Special tooling ensures that every yoke is machined concentric to the pinion spline for smooth operation. Yokes have provision for computer pick up rings available separately. Every MW pinion yoke can use conventional Spicer 3/8" diameter U-bolts, or the new 2nd Gen™ alloy steel kit to retain the U-joint.

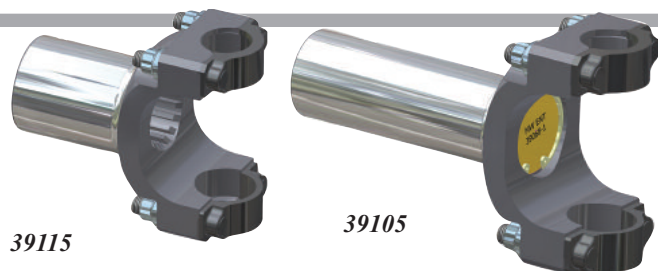


39011

39003	MW 8.5" GM 10 Bolt Pinion Yoke	215.00
	30 spline, for 1350 series U joint. "B" = 3-3/16"	
39006	MW GM 12 Bolt Pinion Yoke (long)	215.00
	30 spline, for 1350 series U joint. "B" = 3-7/8"	
39038	MW GM 12 Bolt Pinion Yoke (short)	204.00
	30 spline, for 1350 series U joint. "B" = 2-7/8" <u>Recommended yoke</u>	

## BILLET ALUMINUM YOKES

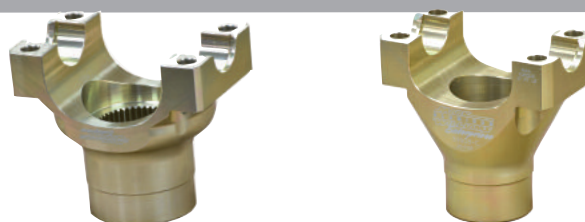
39906	MW Aluminum 12 Bolt Pinion Yoke	295.00
	30 spline, for 1350 series U joint. "B"= 3 7/8"	
39908	MW Aluminum 9" Ford Pinion Yoke	295.00
	28 spline, for 1350 series U joint. "B"= 3-7/8"	
39911	MW Aluminum 9" Ford Pinion Yoke	295.00
	35 spline, for 1350 series U joint. "B"= 3-7/8"	
39936	Low Friction 9" Ford Pinion Yoke	295.00
	32 spline, for 1350 series U joint. B"= 3-7/8" This is the aluminum yoke used with the 57022 series Thirdmembers and the MWE-XXX 9-1/2" Gear sets.	
39972	9" Ford Pinion Yoke 1480 Joint	325.00
	35 spline, for 1480 series U joint. B"= 3-7/8" for 9", 9-1/2", Gear sets.	
39973	12" Modular Pinion Yoke 1480 Joint	325.00
	40 spline, for 1480 series U joint. B"= 3-7/8" for 11", Gear sets.	



39135	Dedenbear PG Rapid Release Yoke	437.00
	27 spline. Powerglide trans. with Dedenbear Tail-Housing Roller bearing 1.500 diameter "D"=5-13/16"	
39157	Quick Release 32 Spline Roller Bearing	437.00
	32 spline. Roller bearing with 1.888" diameter D"=6-7/16"	
39110	Replacement Steel Caps, Bolt on (pr)	80.00
	For pre 2016 yoke with threaded holes.	
39112	Replacement Steel Caps, Gen II, stud (pr)	97.00



39008	MW 9" Ford Pinion Yoke, 28 spline	195.00
	28 spline, for 1350 series U joint. "B" = 3-7/8". Note: 57604 shim required if yoke is used with stock support.	
39011	MW 9" Ford Pinion Yoke, 35 spline	210.00
	35 spline, for 1350 series U joint. "B" = 3-7/8"	
39014	MW Dana 60 Pinion Yoke	195.00
	29 spline, for 1350 series U joint. "B" = 3-1/32"	
39016	MW 8-3/4" Mopar Pinion Yoke	210.00
	10 spline, for 1350 series U joint. "B" = 3-1/2"	
39018	MW '57-'64 Olds/Pontiac Pinion Yoke	195.00
	13 spline, for 1350 series joint. "B" = 3.160"	
39023	MW 8.8" Ford Pinion Yoke	195.00
	30 spline, for 1350 series U joint. "B" = 3-9/32"	
39037	MW 12" Rear	270.00
	40 Spline, for 1350 Series U-Joint "B"=3.830"	
39025	MW 9" Pinion Yoke 1330 series Joint	195.00
	28 spline for MW support, 1330 Ford joint (3-5/8 X 1-1/8") "B"=3-1/2"	
39083	14Bolt GM Truck 1410 series joint	304.00
	30 spline for early GM Truck used in Rock Bouncer	



39973 1480 Joint

39908 1350 Joint

All MW aluminum yokes are CNC machined from 7075-T6 billet materials and have the MW Gold Coat process. These 1350 series pinion yokes mate to the 39912 Gen II and 1480 Joint, 39075 U-Bolt kits. (Page 73)

**MARK WILLIAMS** Enterprises®