

INSTALLATION - SERVICE INSTRUCTIONS

765 South Pierce Avenue Louisville, Colorado 80027

303-665-6901 Phone 800-525-1963
www.markwilliams.com



Bulletin #102 page 1 of 3 **50255/50265 EZ-ALIGN AXLE KIT**

August '19

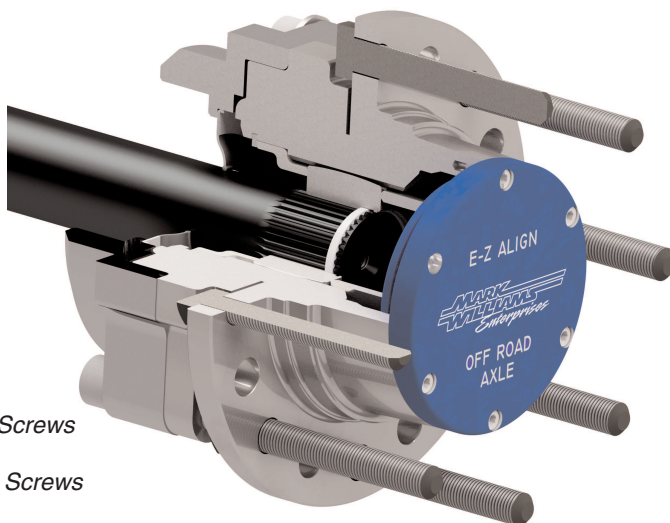
PART NUMBERS:

DESCRIPTION

50255/50265... F350 Hub Kit 4340 or 300M Axle (Pair)
(For use with 50290/50295 Weld Cups)

PARTS INCLUDED:

2X - 50291/50298...40 Spline Axle, 4340 Steel or 300M
2X - 50292...Splined Donut, transmits power from 40 spline axle to F350 Hub
2X - 50293...Split Ring
2X - 50294...Hub Cover
2X - 50296...Inboard Locating Spacer
2X - 50297...Outboard Locating Spacer
2X - -153... 3.693" OD O-Ring.
12X - 216.05.15.0.8...5MM X 0.8 - 15MM Socket Head Cap Screws
2X - HO-175...1.75" ID Internal Snap Ring
8X - 219.14.50.1.50...14MM X 1.5 - 50MM Socket Head Cap Screws



PARTS NOT INCLUDED:

SP940200 Timken F350 Hub 2005-2010. Hubs can be sent to MWE for redrilling if non-standard hole patterns are required.
50290/50295 Weld Cups

PRIMARY APPLICATIONS:

Rock Crawling, Ultra4, General Off-Road Use

ASSEMBLY OVERVIEW:

- 1) If using MW Weld Cup (50290/50295) complete steps 1-8 of service bulletin #104 before starting hub kit assembly.
- 2) Slide inboard spacer (50296) into hub. Install 75MM ID internal snap ring into groove inboard of spacer.
- 3) Lightly oil o-ring on the outside of the hub. Slide the hub onto the weld cup.
- 4) Install brake kit. If using MW 71900 brake kit, see service bulletin #103 for instructions and complete fully before continuing to step #5.
- 5) Slip split ring over the axle and ensure it seats fully in the groove. Slide splined donut over the axle until it bottoms out on the split ring. Install 1.75" ID internal snap ring into groove in splined donut. See Figure 1 for orientation.
- 6) Lightly oil the FRR-014 seal(s). Slide the axle and splined donut assembly through the hub until the splined donut bottoms out on the inboard spacer.
- 7) Slide outboard spacer into the hub until it touches the splined donut. There will be a gap between the outboard spacer and hub cover.
- 8) Lightly oil the -153 o-ring. Install the o-ring into the groove on the hub cover. Slide hub cover into place and use six 5MM X 0.8 - 15MM socket head cap screws secure the cover to the hub. Tighten the screws until hand tight.
- 9) Bleed the brakes... Go racing!

TORQUE SPECS:

Weld cup bolts (14MM X 1.5 bolts) 60 ft/lbs.

INSTALLATION - SERVICE INSTRUCTIONS

765 South Pierce Avenue Louisville, Colorado 80027

303-665-6901 800-525-1963 www.markwilliams.com

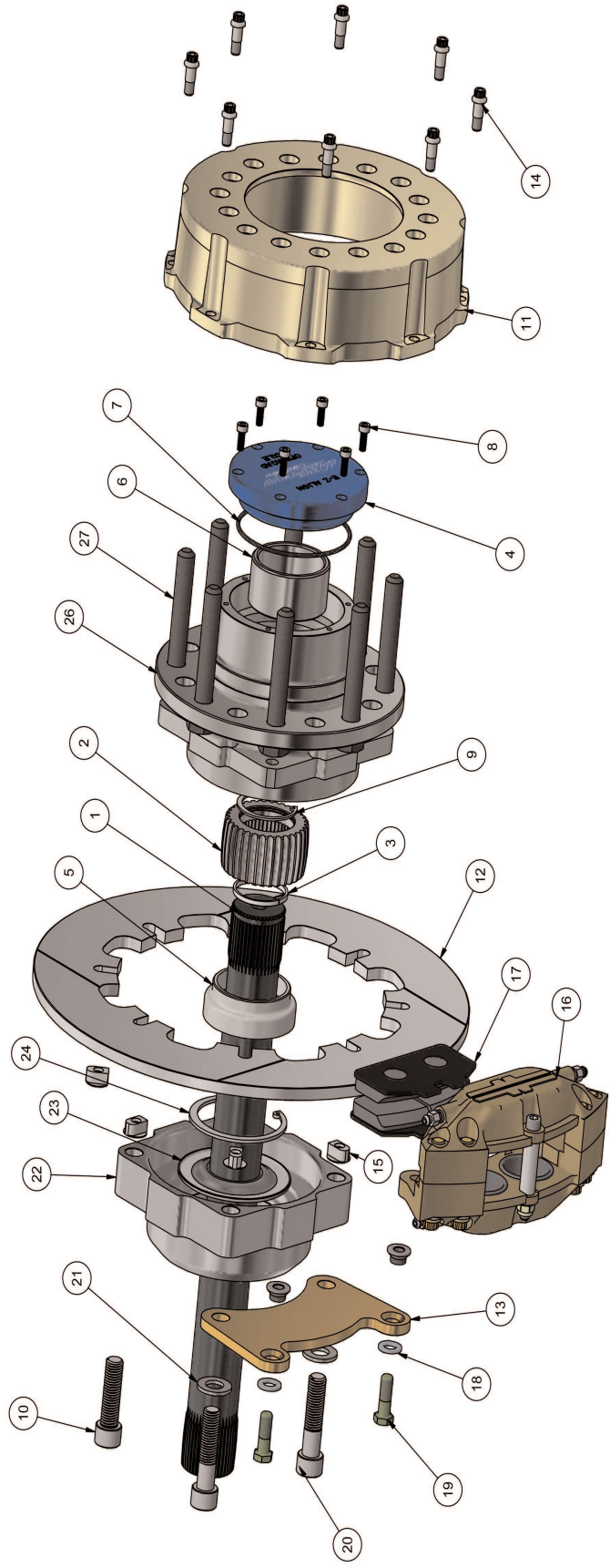


Bulletin #102 page 2 of 3 **50255/50265 EZ-ALIGN AXLE KIT**

August '19



Figure 1: Splined Donut Axle Retaining Method



50290/50295 Weld Cup Kit (Kit quantity is for one corner, same as shown below) **71900 Brake Kit** (Kit quantity is for entire rear end, quantity shown below is for one corner) **50255/50265 EZ-Align Axle Kit** (Kit quantity is for entire rear end, quantity shown below is for one corner)

ITEM	QTY	PART NUMBER	DESCRIPTION	ITEM	QTY	PART NUMBER	DESCRIPTION	ITEM	QTY	PART NUMBER	DESCRIPTION
22	1	50295	WELD CUP, F3500 HUB TO 4" TUBE (EA)	11	1	71028	ADAPTOR, BRAKE HAT F350-CUP	1	1	50297/50298	40 SPLINE AXLE, F350 HUB
23	1	FRK-014	SEAL, LIQUID TIGHT NASCAR FLOATER	12	1	71029	DISC, F350 HUB-WELD CUP	2	1	50292	SPLINED BUSHING, F350 HUB
24	1	HO-295	INTERNAL RETAINING RING 2.95" (.75mm)	13	1	71031	BRACKET, CALIPER MOUNT, F350 HUB TO WELD CUP	3	1	50293	SPLIT RING, 1.96, F350 HUB
25	1	NOT INCLUDED	PARTS BELOW	14	8	71033	BOLT, 12 POINT BRAKE ADAPTOR	4	1	50294	HUB COVER, F350 HUB
26	1	50299	REDRILLED TIMKEN F350 UNIT BEARING	15	8	71037	DRIVE BUSHING FOR 340 SLOTTED DISK	5	1	50296	LOCATING SPACER REAR, F350 HUB
				16	1	81100-F350	CALIPER, THIN DISC, RADIUS MOD ASSEMBLY	6	1	50297	LOCATING SPACER FRONT, F350 HUB
				17	2	81130-F350	FERODO HI-FRICTION LINING	7	1	-153	3.693 OD O-RING
				18	2	AN122584	WASHER, HARD 3/8 X 1.078	8	6	216.05.15.0.8	BOLT, METRIC SOCKET HEAD M5-0.8 X 15mm
				19	2	AN6-10A	BOLT, AIRFRAME 3/8 X 1.078	9	1	HO-175	INTERNAL RETAINING RING, 1.75" BORE
				20	2	216.14.60.1.50	SCOKET CAP, 14mm X 60mm 1.5mm PITCH	10	2	216.14.50.1.50	SCOKET CAP, 14mm X 50mm 1.5mm PITCH
				21	2	227.14.28WA	WASHER, M14 SCREW SIZE, 15MM ID X 28MM OD				