

INSTALLATION - SERVICE INSTRUCTIONS

765 South Pierce Avenue Louisville, Colorado 80027

303-665-6901 Phone 800-525-1963
www.markwilliams.com



Bulletin #103 page 1 of 3

71900 BRAKE KIT

August '19

PART NUMBERS:

71900... F350 Hub Brake Kit (Pair)
(For use with 50290/50295 Weld Cups)

DESCRIPTION

PARTS INCLUDED:

2X - 71028... Brake Hat
2X - 71029... 14" Solid Brake Disc With Cleaning Grooves
2X - 71031... Caliper Mount Bracket
16X - 71033... Bolt, 12 Point 5/16" - 24
16X - 71037... Drive Button
2X - 81100-F350... 4 Piston Caliper Assembly
4X - 81130-F350... High Friction Brake Pad
4X - AN122584... 3/8" Washer .078" Thick
4X - AN6-10A... Bolt, 3/8" - 24
4X - 219.14.60.1.50... 14MM X 1.5 - 60MM Socket Cap Screws
4X - 227.14.28WA... 14MM Washers

PARTS NOT INCLUDED:

SP940200 Timken F350 Hub 2005-2010.
Hubs can be sent to MWE for redrilling if non-standard hole patterns are required.
50294 Hub Cover and 50291/50298 Axles are sold separately
in 50255/50265 EZ Align Axle Kit.

PRIMARY APPLICATIONS:

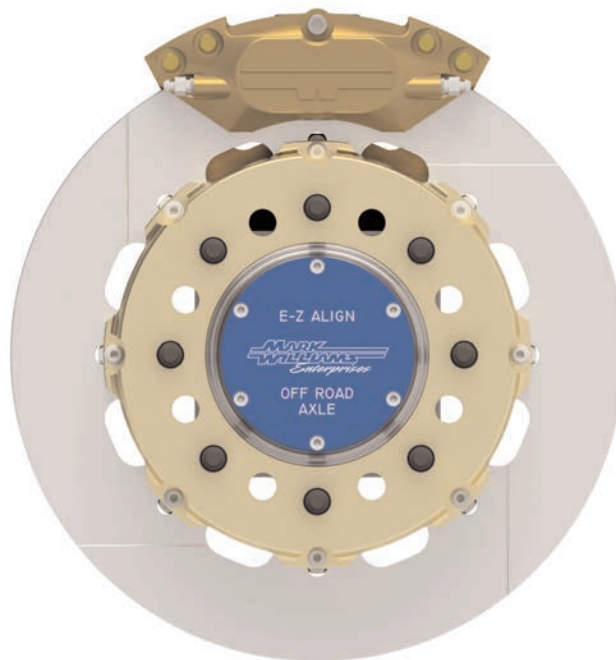
Rock Crawling, Ultra4, General Off-Road Use

ASSEMBLY OVERVIEW:

- 1) If using MW EZ Align Axle Kit 50255/50265, complete steps #1-3 of service bulletin #102 before starting this assembly.
- 2) Align caliper bracket at either a 12:00, 3:00, or 9:00 position. Thread two 14MM X 1.5 - 60MM bolts through the caliper bracket, weld cup, and into the hub using the included washers. Thread two 14MM X 1.5 - 50MM bolts through the two remaining holes in the weld cup. The calipers will need to be at either a 3:00 or 9:00 position to be bled properly.
- 3) Slide drive buttons into the brake disc. Lay brake hat on top of rotor and use 71033 bolts to secure the hat to the rotor.
See Figure 1 for orientation. Use small drop of #271 red thread locking compound
- 4) Slide rotor and brake hat assembly over the wheel studs. The ID of the brake hat will register on the hub and the inside face will be flush against the hub.
- 5) Install brake pads in caliper assembly. Bolt caliper assembly to caliper mount. Ensure centerline of brake caliper assembly is in line with the centerline of the rotor. See service bulletin #86 for general brake installation.
- 6) If using MW EZ Align Axle Kit 50255/50265, continue on to step #5 of service bulletin #102.

TORQUE SPECS:

Rotor attachment bolts (5/16-24 12 point bolts) 25 ft/lbs. with #271 red thread locking compound
Caliper mounting bolts (3/8-24 AN bolts) 35 ft/lbs.
Weld Cup bolts (14MM X 1.5 bolts) 60 ft/lbs.



INSTALLATION - SERVICE INSTRUCTIONS

765 South Pierce Avenue Louisville, Colorado 80027

303-665-6901 800-525-1963 www.markwilliams.com



Bulletin #103 page 2 of 3

71900 BRAKE KIT

August '19

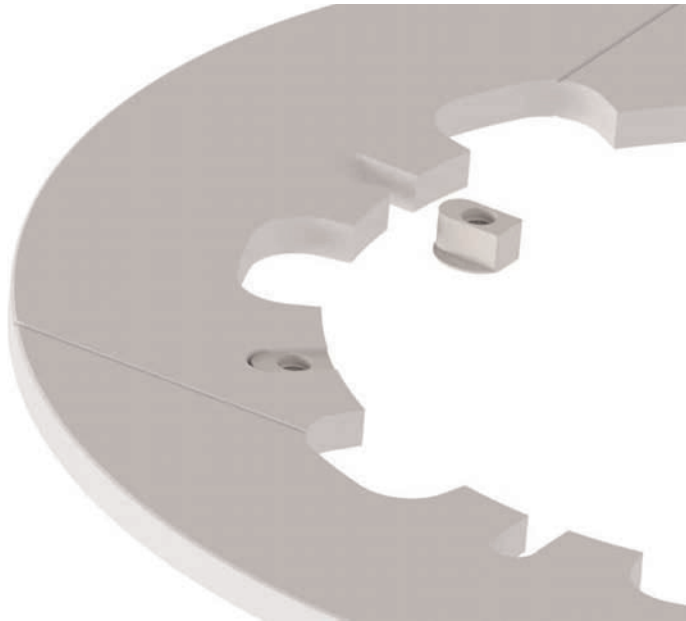
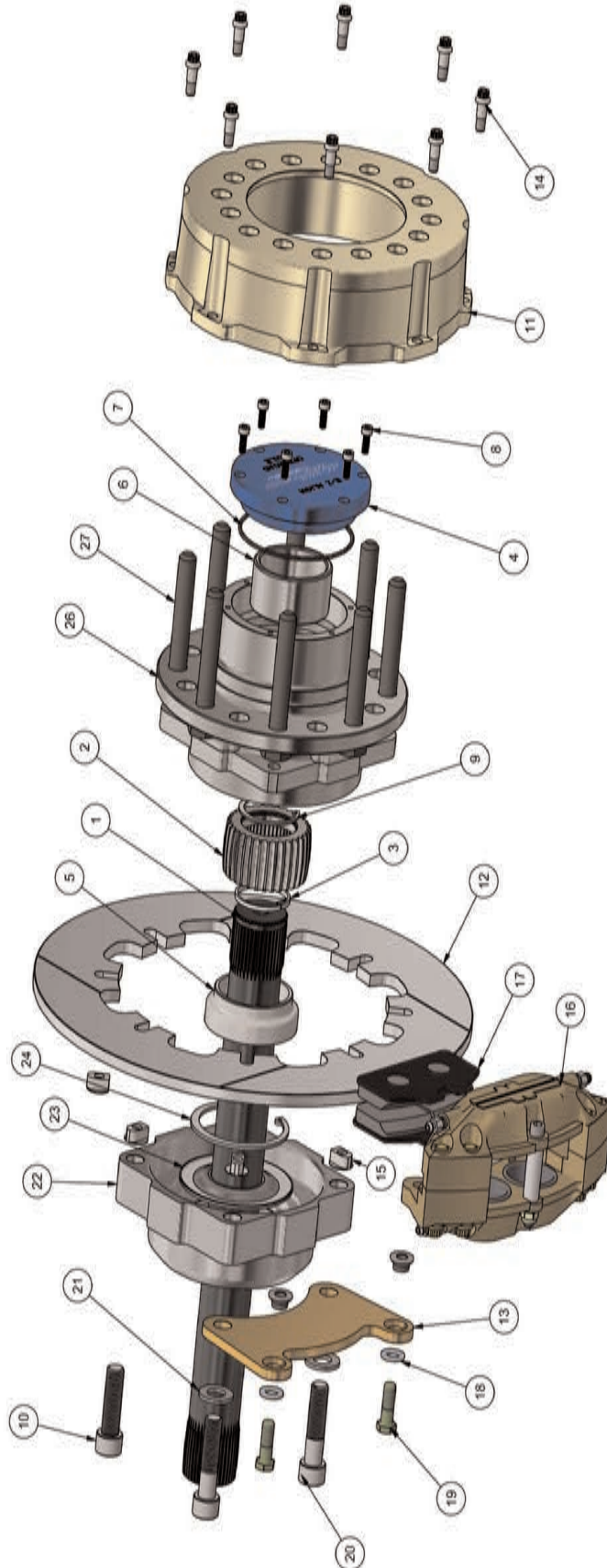


Figure 1: Drive Button Orientation



50290/50295 Weld Cup Kit (Kit quantity is for one corner, same as shown below) **71900 Brake Kit** (Kit quantity is for entire rear end, quantity shown below is for one corner) **50255/50265 EZ-Align Axle Kit** (Kit quantity is for entire rear end, quantity shown below is for one corner)

ITEM	QTY	PART NUMBER	DESCRIPTION	ITEM	QTY	PART NUMBER	DESCRIPTION
22	1	50295	WELD CUP, F3500 HUB TO 4" TUBE (EA)	1	1	50291/50296	40 SPLINE AXLE, F350 HUB
23	1	PRR-214	SEAL, LIQUID TIGHT NASCOP FLOATER	2	1	50292	SPLINED BUSHING, F350 HUB
24	1	HO-295	INTERNAL RETAINING RING 2.95" (75mm)	3	1	50293	SPLIT RING, 106, F350 HUB
25	1	50299	REDRILLED TIMKEN F350 UNIT BEARING	4	1	50294	HUB COVER, F350 HUB
26	1	50299	REDRILLED TIMKEN F350 UNIT BEARING	5	1	50295	LOCATING SPACER REAR, F350 HUB
11	1	71908	ADAPTOR, BRAKE HAT F350-CUP	6	1	50297	LOCATING SPACER FRONT, F350 HUB
12	1	71909	DISC, F350 HUB-WELD CUP	7	1	50297	3.693 OD O-RING
13	1	71911	BRACKET, CALIPER MOUNT F350 HUB TO WELD CUP	8	1	50297	3.693 OD O-RING
14	8	71931	BOLT, 12 POINT BRAKE ADAPTOR	9	1	50297	3.693 OD O-RING
15	8	71933	DRIVE BUTTON FOR 340 SLOTTED DISK	10	1	50297	3.693 OD O-RING
16	1	81100-F350	CALIPER, THIN DISC, RADIUS MOD ASSEMBLY	11	1	50297	3.693 OD O-RING
17	2	81130-F350	PERIODIC FRICTION LINING	12	1	50297	3.693 OD O-RING
18	2	AN122584	WASHER, HARD 3/8" X 1.078"	13	1	50297	3.693 OD O-RING
19	2	AN6-10A	BOLT, AIRFRAME 3/8" X 1.078"	14	1	50297	3.693 OD O-RING
20	2	215-14-601-50	SOCKET CAP, 14mm X 50mm 1.5mm PITCH	15	1	50297	3.693 OD O-RING
21	2	227-14-28WA	WASHER, M14, SCREW SIZE, 15MM ID X 28MM OD	16	1	50297	3.693 OD O-RING