

INSTALLATION - SERVICE INSTRUCTIONS



Bulletin NO. 0017
PAGE 1 OF 2

June
2002

Part Numbers:

- 58200 "C" clip eliminator kit for standard GM 10 and 12 bolt rears using MW axles (1.532").
- 58250 "C" clip eliminator kit for standard GM 10 and 12 bolt rears using MW axles (1.625").

Parts Included:

- 2- 58201 Bearing housing.
- 2- 58202 Bearing retainer.
- 1- 58503 Axle bearings w/lock rings, 1.532" I.D. (58200 kit)
- 1- 58504 Axle bearings w/58504M lock rings, 1.625" I.D. (58250 kit)
- 8- 06434342 3/8-24 x 2 1/2" Grade 9 bolt.
- 8- 21FC-624 3/8-24 Self locking nuts.
- 2- -230 Bearing housing "O" ring.

Primary Applications:

Drag Racing applications using standard passenger car 10 or 12 bolt rear end with Mark Williams Hi-Torque axles.

Installation Overview:

- 1) Remove stock axles, bearings and seals from housing. Using a hacksaw or abrasive cut-off wheel, trim housing outboard of backing plate flange to 5/16" to 3/8" (see Diagram B).
- 2) Press on axle bearings and lock rings. Make sure bearings and lock rings are fully seated. Retainer plates should be in place on the axle before pressing on bearings.
- 3) Before installing axles, backing plates must be in place and -230 "O" ring up against the backing plate. Install 58201 bearing housing on the the portion of the housing left after trimming (see Diagram B). It may be necessary to clean rust and dirt from the part of the stub that will locate the bearing housing. It may also be necessary to tap the bearing housing on with a plastic mallet. Make sure the holes in the bearing housing, backing plate and the housing flange are all lined up and that the "O" ring is not pinched between bearing housing and backing plate..
- 4) Slide axles into housing, line up bolts in retainer with bearing housing, engage spline and push into position. Install 3/8" nuts and torque to 30-35 ft/lbs.

Torque Specs:

Retainer bolts (3/8-24) 30-35 ft/lbs.

Maintenance Requirements:

Periodic inspection of bearing and check torque on retaining bolts.

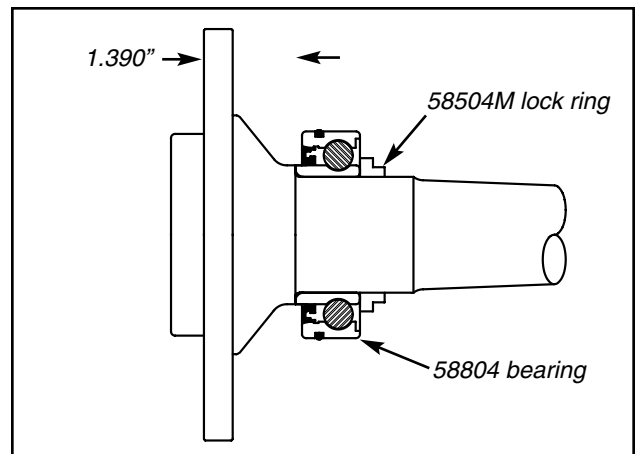


Diagram A

INSTALLATION - SERVICE INSTRUCTIONS

Mark Williams Enterprises

Bulletin NO. 0017
PAGE 2 OF 2

Mark Williams Part No 58250

ITEM QTY	NAME	DESCRIPTION
1	06434342	HEX CAP SCREW
2	21FC-624	HEX NUT
3	58201	Housing C-Clip Eliminator Kit
4	58504-1	Bearing, 1.625" ID, 3.15" OD
5	58202	Retainer for C-Clip Eliminator (sm.)
6	2-230	O-Ring
7	58504RC	Lock Ring for 1.625" Bearing
8	50100	Mark Williams Axle (NOT INCLUDED)
9	0	Existing Axle Tube (must be modified)
10	0	Existing Brake Backing Plate

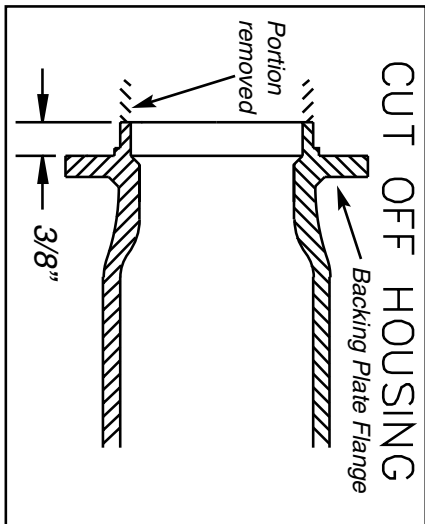
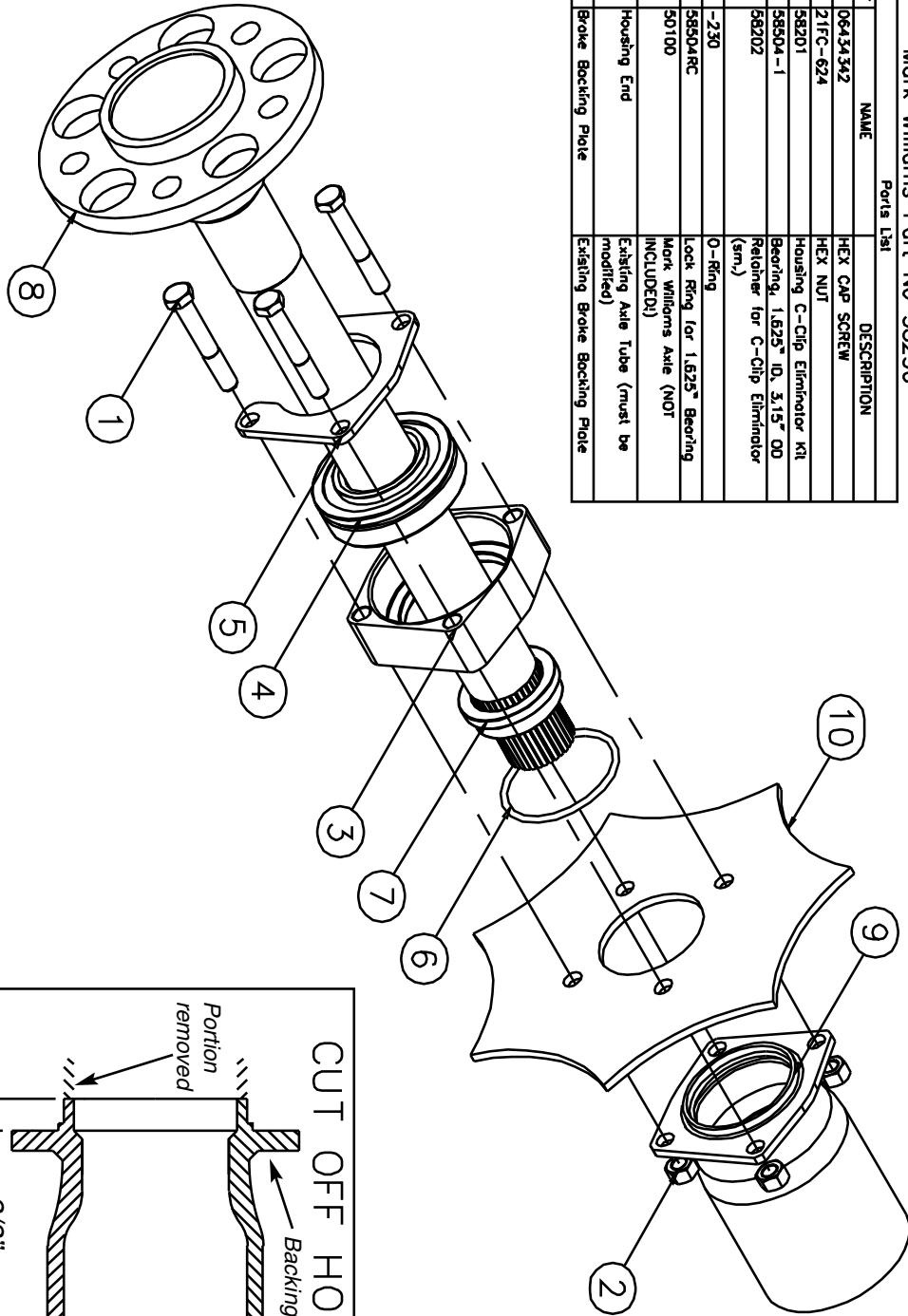


Diagram B